

YeeYe  
Hardware

台州一业

一心一意 永攀高峰

高品质产品制造商  
Top quality  
manufacturer

Since 2007



YeeYe hardware is proud to be committed to high quality to top quality products from the beginning. We are proud to say that our products continuously surpass industry standards. More than anything we want you to feel confident in choosing YeeYe for your precision parts and highest quality standard products.

It all began in 1995 when a small steel fabrication business launched by Bulldog, Moer started manufacturing builder hardware in Linhai. By 2007, YeeYe hardware was born, and works with its customers designing and implementing features sought after by discriminating consumers around the globe.

By 2015, we start to make hydraulic parts.

By 2018, we start to supply hygienic levelling feet parts and hygienic design screws and nuts.

YeeYe hardware locate in Linhai, a small beautiful city, operates with 30,000+ square feet manufacturing space, over 80 employees. YeeYe's commitment to producing quality products combined with honest, reliable service has proven to be a successful handle work to ensuring the continued rapid growth of the company.

YeeYe's proud of high quality control system and his seasoned and high efficiency employees.

Welcome to visit our factory.

YEEYE HARDWARE  
913310825540126956  
SANDONGQI AO- LINHAI- ZJ- CN  
576-85196688  
www.chi-na-yi-ye.com



台州一业金属制品有限公司 / 临海市欣业机械有限公司

Taizhou Yiye Hardware Co., Ltd. / Linhai Xinye Machinery Co., Ltd.

始于2007年

Since 2007



Aibeli™







QMS  
CERTIFICATE  
ISO 9001  
质量管理  
体系认证



## QMS CERTIFICATE OF REGISTRATION

Registration No.: 12820Q21079R0S

This is to certify that the Quality Management System of  
**Taizhou Yiye Hardware Co.,Ltd.**

Unified social credit code(Organization code): 913310825540126956  
Sandongqiao Village, Jiangnan Street, Linhai City, Taizhou City, Zhejiang Province  
317000P.R.China

Has been audited to conform to the following Quality Management  
System Standard:

GB/T19001-2016/ISO9001:2015

For the whole process of

Sales of metal products, furniture parts and auto parts

DATE OF ISSUE: 10-09-2020    DATE OF SUPERVISION : 10-09-2020    VALID UNTIL: 10-08-2023

Certified organizations within the validity period of the certificate surveillance audit  
at least once a year, the organization should take audit before 09-11-2021  
to remain the validity. This certificate is valid until 09-11-2021.

The certificate information is available in the certification and accreditation  
administration of the People's Republic of China's official website:[www.cnca.gov.cn](http://www.cnca.gov.cn)



中国认可  
国际互认  
管理体系  
MANAGEMENT SYSTEM  
CNAS C128-M



No.21, No.4 Yard, Yuetanbeixiaojie Street,  
Xicheng District, Beijing.  
010-68017408



EMS  
CERTIFICATE  
ISO 14001  
环境管理  
体系认证



思平



Certificate NO: 3712E0220R08

## Environmental Management System Certification

This Proof

**TAIZHOU YIYE HARDWARE CO.,LTD.**

Unified social credit code: 913310825540126956

Address: No. 559, Jingjiang South Road, Jiangnan Street, Taizhou, Zhejiang, China(317099)

**Environmental Management System  
is in conformity with**

**GB/T24001-2016/ISO14001:2015 Standard**

**The scope of certification covers**

**Related environmental management activities involved in the  
metal products, furniture parts, automobile parts (export only)**

Date of Issue: Dec 23, 2022

Date of Renew: Dec 23, 2022

Date of Expiry: Dec 22, 2025

General Manager:

Note: The organization will accept the supervision twice before Dec 22, 2023 and Dec 22, 2024. After that date, the certificate will be valid only when it is used together with the "Notice of maintaining the use of the certificate and certification mark". The validity of the certificate can be verified by scanning the QR code or by the websites of Siping Certification (Shanghai) Co., Ltd. and Certification and Accreditation Administration of the People's Republic of China, CNCA

Shanghai: Siping Certification Website: www.spsxz.com

Meanwhile, you can search the CNCA website: www.cnca.gov.cn



中国认可  
国际互认  
管理体系  
MANAGEMENT SYSTEM  
CNAS C252-M



**SIPING Certification Service(Shanghai) Co.,Ltd**

ADD: Room 920, Jingjiang Building, No.599 Eefyin Road, Jingdian District, Shanghai, China  
postcodes: 301301 Tel: 021-59184249



Hygienic  
Design  
Hexagon  
Screw  
卫生設計  
六角螺絲

St. Steel  
SS304  
不銹鋼  
with  
NBR Sealing Ring  
丁腈橡膠密封圈

Tolerance  
公差要求  
≤0.15mm

S1131-HD

光洁度 Ra0.8 镜面抛光	Roughness Ra0.8 Mirror Polished
盐雾测试 Salt Spray Test	>96 hours



strict standards

**SUS304**

easy to clean  
corrosion resistant  
stable functionality  
smooth and even surfaces





Hygienic  
Design  
Hexagon  
Nut  
卫生設計  
六角螺母

St. Steel  
SS304  
不锈钢  
with  
NBR Sealing Ring  
丁腈橡胶密封圈

Tolerance  
公差要求  
≤0.15mm

N1131-HD

光洁度 Ra0.8 镜面抛光	Roughness Ra0.8 Mirror Polished
盐雾测试 Salt Spray Test	>96 hours



strict standards

**SUS304**

easy to clean  
corrosion resistant  
stable functionality  
smooth and even surfaces



Hygienic  
Design  
Star Knob  
卫生设计  
工业把手

St. Steel  
SS304  
不锈钢

Tolerance  
公差要求  
≤0.15mm

K071-HD

光洁度 Ra0.8 镜面抛光	Roughness Ra0.8 Mirror Polished
盐雾测试 Salt Spray Test	>96 hours



strict standards

**SUS304**

easy to clean  
corrosion resistant  
stable functionality  
smooth and even surfaces



$\sqrt{\text{Ra0.8}}$

光洁度 <Ra0.8



Hygienic  
Design  
D Handle  
卫生設計  
工业拉手

St. Steel  
SS304  
不锈钢

Tolerance  
公差要求  
≤0.15mm

A005-HD

光洁度 Ra0.8 镜面抛光	Roughness Ra0.8 Mirror Polished
盐雾测试 Salt Spray Test	>96 hours



strict standards

**SUS304**

easy to clean  
corrosion resistant  
stable functionality  
smooth and even surfaces



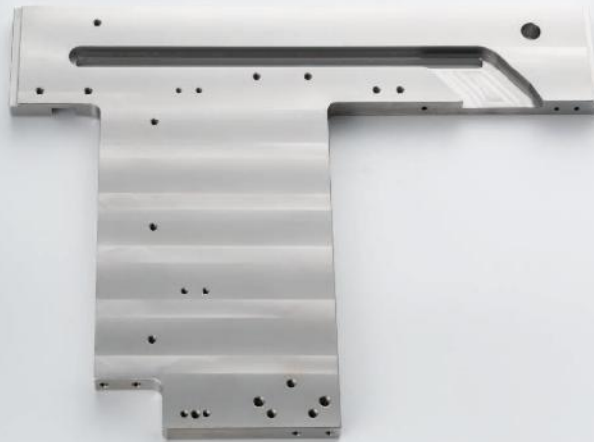


Precision  
Parts  
精密件

St. Steel  
不锈钢

Tolerance  
公差要求  
 $\leq 0.05\text{mm}$

正面 Front



平行度  $< 0.02\text{mm}$   
Parallelism



Geometric Tolerance  
0.05mm  
形位公差  
0.05毫米

全铣削平板零件  
All Milling Parts  
PMT41



背面 Back





Precision  
Parts  
精密件

St. Steel  
不锈钢

Tolerance  
公差要求  
 $\leq 0.05\text{mm}$

## PMT42 Turning/Milling Part

Geometric Tolerance  
0.05mm  
形位公差  
0.05毫米





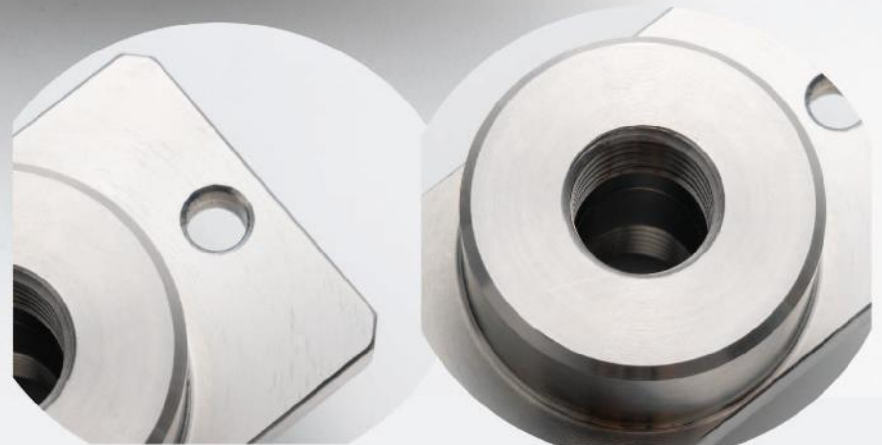
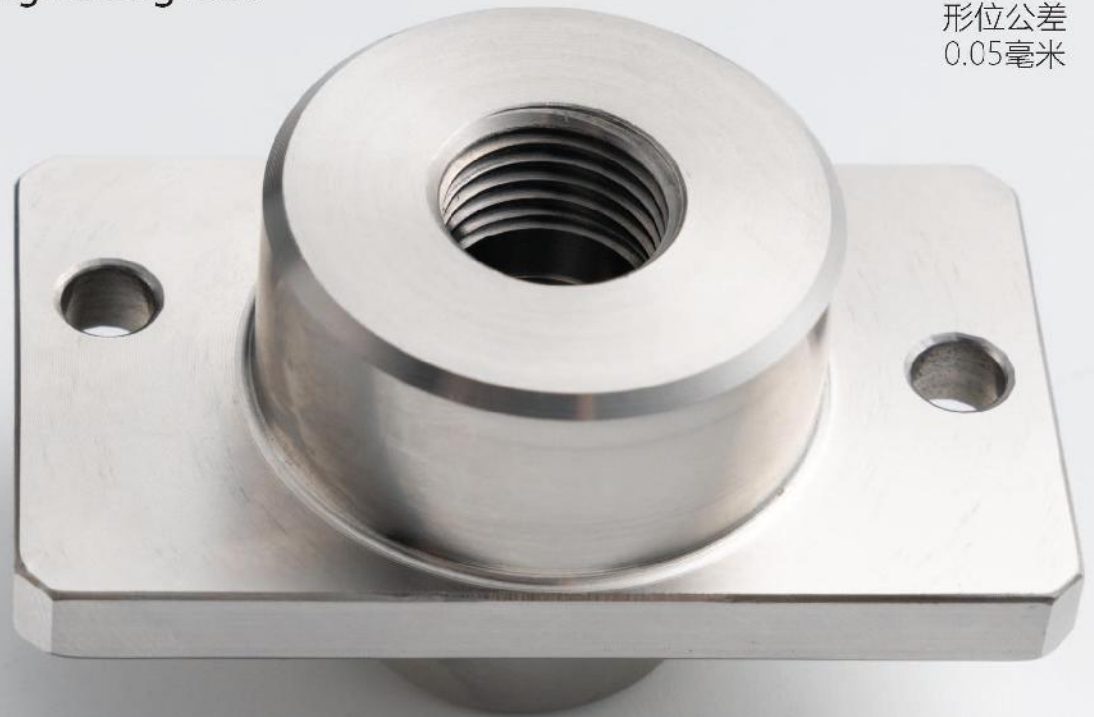
Precision  
Parts  
精密件

St. Steel  
不锈钢

Tolerance  
公差要求  
 $\leq 0.05\text{mm}$

PMT43  
Turning/Milling Part

Geometric Tolerance  
0.05mm  
形位公差  
0.05毫米







Precision  
Parts  
精密件

Stainless Steel  
不锈钢

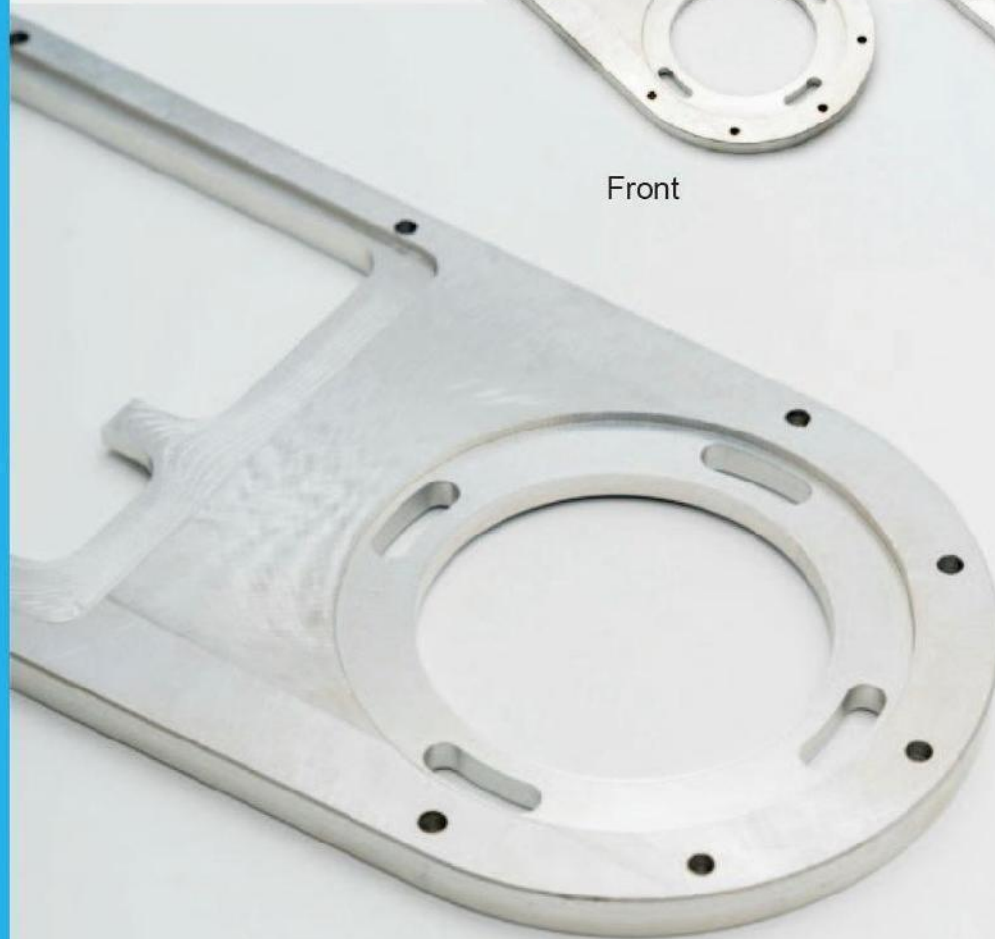
Tolerance  
公差要求  
 $\leq 0.10\text{mm}$

铣削零件  
PMT35  
Milling Part



Front

Back





Precision  
Parts  
精密件

Stainless Steel  
不锈钢

Tolerance  
公差要求  
 $\leq 0.10\text{mm}$

## 车铣钻零件

PMT36  
Turning & Milling Part



Back



Front



Precision  
Parts  
精密件

Stainless Steel  
不锈钢

Tolerance  
公差要求  
 $\leq 0.10\text{mm}$



数控折边  
铣钻零件

PMT37  
Sheet Metal  
&  
Milling Part





Precision  
Parts  
精密件

Stainless Steel  
不锈钢

Tolerance  
公差要求  
 $\leq 0.10\text{mm}$



铣钻零件  
PMT38  
Milling Part



Precision  
Parts  
精密件

Steel  
铁

Tolerance  
公差要求  
 $\leq 0.02\text{mm}$



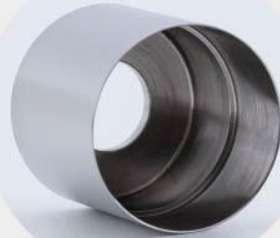
PMT12  
Flange



PMT10  
Steel Spool



PMT16  
Copper Worm



PMT15  
Magnetic steel bracket



PMT14  
Machine part



PMT17  
Mini Chuck



PMT13  
Connector



PMT11  
Automobile parts



Precision  
Parts  
of  
Hydraulic  
液压阀  
精密件

Steel  
铁

Tolerance  
公差要求  
 $\leq 0.02\text{mm}$







Industrial  
D Handle  
工业拉手

St. Steel  
SS304  
不锈钢

Tolerance  
公差要求  
≤0.30mm

A010-ID

18 尺寸  
sizes



item	size	picture
H-17-288	Ø12*CC288*H50+20	
H-17-238	Ø12*CC238*H50+20	
H-17-188	Ø12*CC188*H50+20	
H-17-120	Ø10*CC120*H40+11.2	
H-17-110	Ø10*CC110*H40+11.2	
H-17-100	Ø9*CC100*H30+11.2	
H-17-68	Ø7*CC68*H30+11.2	
H-17-150	Ø12*CC150*H50+20	
H-17A-288	Ø12*CC288*H50	
H-17A-238	Ø12*CC238*H50	
H-17A-188	Ø12*CC188*H50	
H-17A-120	Ø10*CC120*H40	
H-17A-110	Ø10*CC110*H40	
H-17A-100	Ø9*CC100*H30	
H-17A-68	Ø7*CC68*H30	
H-17A-150	Ø12*CC150*H50	



镜面 抛光 8K	Mirror Polished 8K
盐雾测试 Salt Spray Test	>96 hours



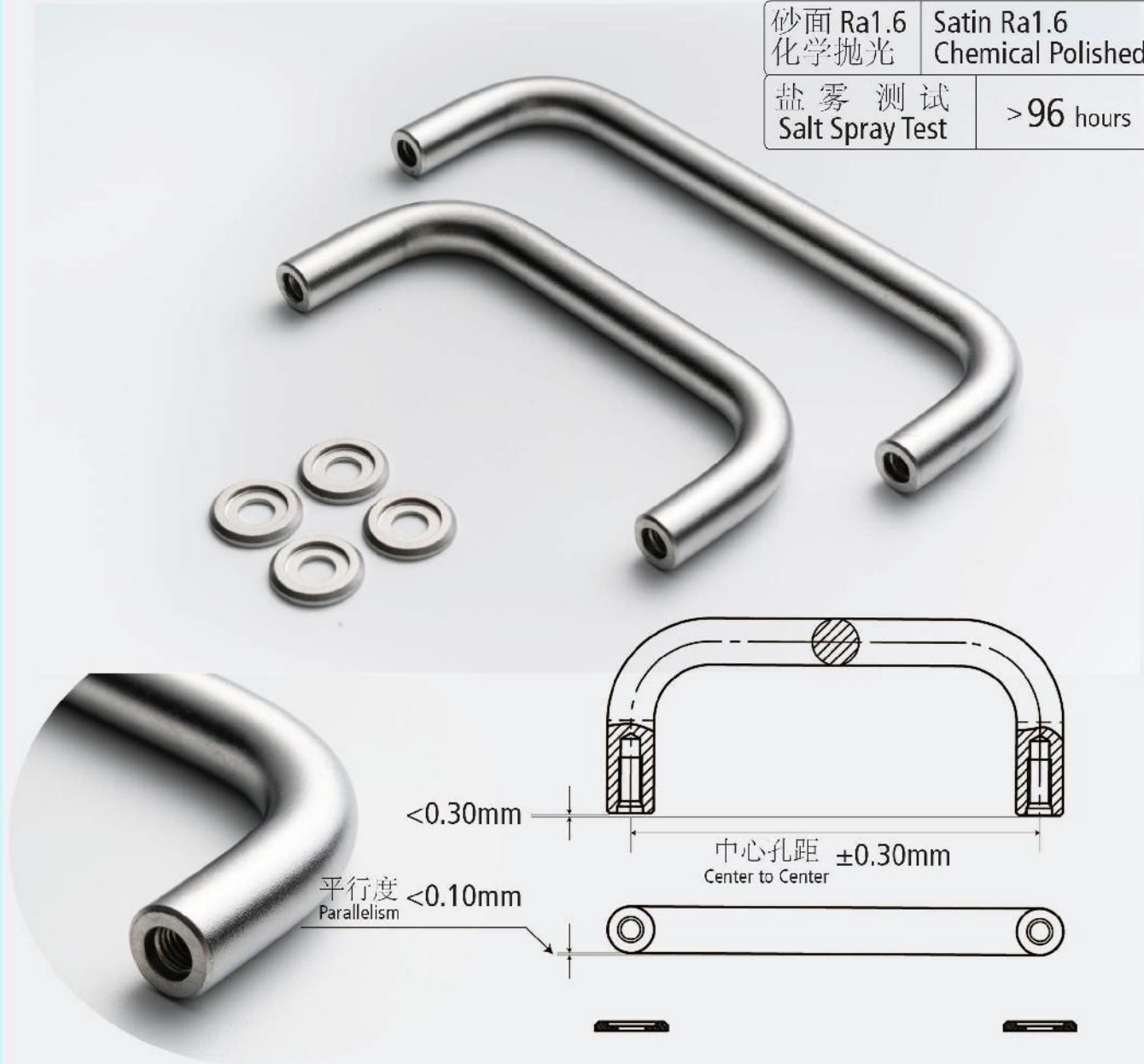
Industrial  
D Handle  
工业拉手

St. Steel  
SS304  
不锈钢

Tolerance  
公差要求  
 $\leq 0.15\text{mm}$

A005-ID

砂面 Ra1.6 化学抛光	Satin Ra1.6 Chemical Polished
盐雾测试 Salt Spray Test	>96 hours





Industrial  
D Handle  
工业拉手

St. Steel  
SS304  
不锈钢

Tolerance  
公差要求  
≤0.15mm

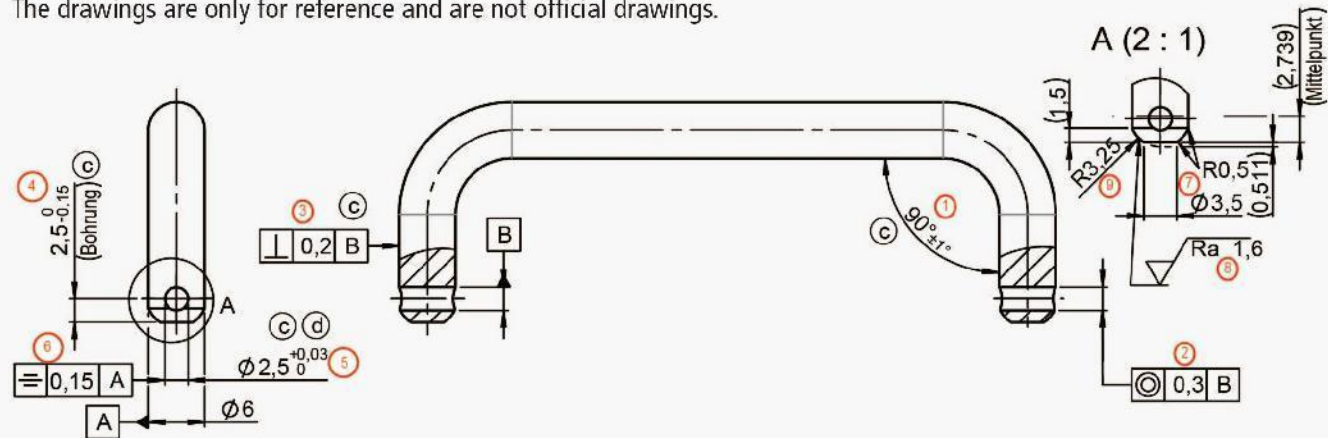
A047  
(LS506)

7 尺寸  
sizes

- Ø6x60mm
- Ø6x90mm
- Ø6x120mm
- Ø9x90mm
- Ø9x120mm
- Ø9x135mm
- Ø9x150mm



部件精密度能做到如下图纸,图纸仅供参考,不作为正式图纸。  
The accuracy of components can meet the accuracy of the following drawings.  
The drawings are only for reference and are not official drawings.







WORKSHOP  
生产车间







TESTING  
ROOM  
检验室





**YeeYe**  
Hardware

台州一业金属制品有限公司



欣业机械

[www.china-yiye.com](http://www.china-yiye.com)

[www.chinaxinye.net](http://www.chinaxinye.net)



AAA  
诚信认证



Taizhou Yiye Hardware Co. Ltd.

台州一业金属制品有限公司

Linhai Xinye Machinery Co. Ltd.

临海市欣业机械有限公司

Tel:0576 85196688,85227657

Fax:0576 85196687

Email: [leao.lee@china-yiye.com](mailto:leao.lee@china-yiye.com)

浙江\*临海市江南街道三洞桥村

Sandongqiao,Linhai,Zhejiang,China

Concentration\*Professional\*Devotion

专心\*专业\*专注

